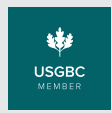


# STEEL REBAR

Corrugated steel reinforcing bar adaptable to different concrete reinforcement structures. It is manufactured by DEACERO utilizing the most advanced equipment and technology, that combined with our highly experienced technical support, will undoubtedly help you reduce costs in material, time, and labor.

WE ARE A PROUD MEMBER OF



## APPLICATIONS

- Slab on grade • Barrier walls • High rise towers
- Structural slabs • Stirrup tie cages • Tilt-up construction
- Pre-cast structures • Retention

## FEATURES

- Different rebar grades and lengths.
- Straight, coiled, or spooled.
- Fishbone or V type.
- Ready to meet any concrete reinforcement requirement.

## ADVANTAGES

- Manufactured to the highest quality standards.
- State of art manufacturing technology.
- Product availability.
- High production capacity.

## MEETS

ASTM A615 G40, G60 OR G80 & ASTM A706 for Weldable Bars



A DIVISION OF

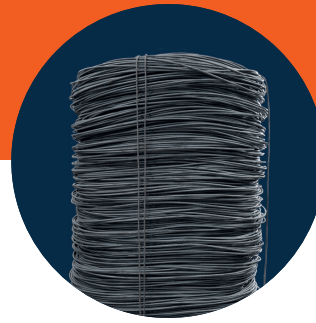


# STEEL REBAR

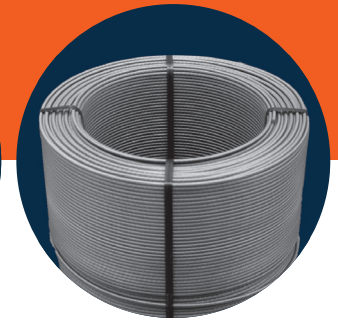
## STRAIGHT



## COILED



## SPOOLED



Our rebar is available straight, coiled, or spooled in different diameters according to project specifications. We also offer rebar fabrication services.

### STRAIGHT REBAR

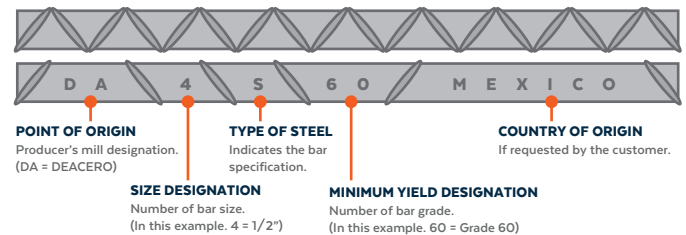
ITEM CODE	DESCRIPTION	PIECES PER BUNDLE
9906	A615 G40 3/8" 20'	266
9908	A615 G40 1/2" 20'	150
9910	A615 G40 5/8" 20'	96
9892	A615 G60 3/8" 20'	266
9893	A615 G60 3/8" 40'	266
9894	A615 G60 1/2" 20'	150
9895	A615 G60 1/2" 30'	150
9896	A615 G60 1/2" 40'	150
9897	A615 G60 5/8" 20'	96
9898	A615 G60 5/8" 30'	96
9899	A615 G60 5/8" 40'	96
9900	A615 G60 3/4" 20'	68
9901	A615 G60 3/4" 30'	68
9902	A615 G60 3/4" 40'	68
24515	A615/A706 G60 1/2" 60'	110
24516	A615/A706 G60 3/4" 60'	45
24517	A615/A706 G60 5/8" 60'	70
24512	A615/A706 G60 7/8" 60'	34
24514	A615/A706 G60 1" 60'	25
24495	A615/A706 G60 1 1/8" 60'	20
24513	A615/A706 G60 1 1/4" 60'	16
24496	A615/A706 G60 1 3/8" 60'	15

### REBAR DESIGNATION & NOMINAL DIMENSIONS

BAR SIZE	WEIGHT (LB/FT)	DIAMETER (IN)	AREA (IN <sup>2</sup> )
#3 (3/8")	0.376	0.375	0.11
#4 (1/2")	0.668	0.500	0.20
#5 (5/8")	1.043	0.625	0.31
#6 (3/4")	1.502	0.750	0.44
#7 (7/8")	2.044	0.875	0.60
#8 (1")	2.670	1.000	0.79
#9 (1 1/8")	3.400	1.128	1.00
#10 (1 1/4")	4.303	1.270	1.27
#11 (1 3/8")	5.313	1.410	1.56

### SPECIFICATION MARKING

Rebar is marked as set out in ASTM A615/A615M in point 19 marking.



### COILED REBAR GRADE AVAILABILITY BY SIZE

BAR SIZE	60 GRADE		COIL WEIGHT
#3 (3/8")	A615	A706	1.4 MTONS
#4 (1/2")	A615	A706	1.4 MTONS
#5 (5/8")	A615	A706	1.4 MTONS

### SPOOLED REBAR GRADE AVAILABILITY BY SIZE

BAR SIZE	60 GRADE		SPOOL WEIGHT
#3 (3/8")	A615	A706	3 MTONS
#4 (1/2")	A615	A706	3 MTONS

### STRAIGHT REBAR GRADE AVAILABILITY BY SIZE

BAR SIZE	40 GRADE	60 GRADE		80 GRADE	
#3 (3/8")	A615	A615	-	-	-
#4 (1/2")	A615	A615	A706	A615	A706
#5 (5/8")	A615	A615	A706	A615	A706
#6 (3/4")	-	A615	A706	A615	A706
#7 (7/8")	-	A615	A706	A615	A706
#8 (1")	-	A615	A706	A615	A706
#9 (1 1/8")	-	A615	A706	A615	A706
#10 (1 1/4")	-	A615	A706	A615	A706
#11 (1 3/8")	-	A615	A706	A615	A706

WE SERVE THE CONSTRUCTION MARKET WITH A BROAD MIX OF SUPERIOR PRODUCTS AND SOLUTIONS.

- Tie Wire (3.5 lb)
- Grade 40 & Grade 60 Rebar (straight, coil & spools)
- Wire Coil Nails, MQB Nails, Plastic Strip Nails, Paper Tape Nails & Staples
- Angle, Flat & Round Bars
- I-Beam & Channels
- Steel Fibers
- Cut Dowels
- Stucco Netting (17 ga & 20 ga)
- Rebar Fabrication (Cut Bar & Bent Bar)
- Beam Fabrication (Cuts & Punched in Bright, Galvanized, or Primed)
- Gabions
- Silt Fence Wire Backing
- PC Strand
- Welded Wire Reinforcement Mesh
- Black Annealed Wire (100 lb)
- Galvanized Welded Wire
- Fencing Solutions (Chain Link Fence, Ornamental Fence & Woven Fences)
- Duplex Nails, Common Nails, Vinyl Sinkers, Masonry Nails & Spikes

